

## Rivet sets

**DIN**  
**6434**

Nietzieher

Supersedes  
December 1969 edition.

*In keeping with current practice in standards published by the International Organization for Standardization (ISO), a comma has been used throughout as the decimal marker.*

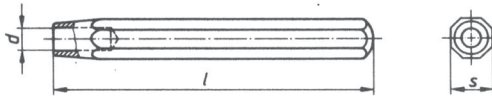
Dimensions in mm

**1 Scope and field of application**

This standard specifies requirements and technical delivery conditions for rivet sets intended to be used with DIN 660, DIN 661, DIN 662 and DIN 674 rivets.

**2 Dimensions and designation**

Details left unspecified are to be selected as appropriate.



Designation of a rivet set with an octagonal shank (B), designed for use with a rivet of shank diameter 4 mm:

Rivet set DIN 6434 - B 4

Rivet set size	$d$ $\pm 0,2$	$l$ $\pm 3$	$s$
2	2,5	100	10
3	3,5		12
4	4,5		12
5	6	110	14
6	7		16
8	9	120	

**3 Technical delivery conditions**

The technical delivery conditions specified in DIN 7255 shall apply.

The rivet set end shall be given a cylindrical or tapered shape by grinding.

Continued on page 2

### Standards referred to

DIN 660	Round head rivets with nominal diameters from 1 to 8 mm
DIN 661	Countersunk head rivets with nominal diameters from 1 to 8 mm
DIN 662	Oval-head rivets with nominal diameters from 1,6 to 6 mm
DIN 674	Mushroom head rivets with nominal diameters from 1,4 to 6 mm
DIN 7255	Engineer's cold chisels and allied tools; technical delivery conditions

### Previous editions

DIN 6434: 11.46, 03.64, 12.69.

### Amendments

The following amendments have been made to the December 1969 edition.

- a) The specifications of the standard have been harmonized with those of DIN 7255.
- b) Limit deviations have been specified for dimensions  $d$  and  $l$ .
- c) The standard has been editorially revised.

### International Patent Classification

B 21 J 15-38